










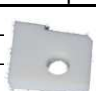
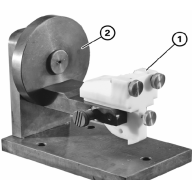
Common Rail Diesel

Only for DRS-Partner !

Table of Content

Special Tools.....	Page 2
PCR systems parts Overview.....	Page 3
Replacement Parts.....	Page 9
Repair Parts	Page 13
PCR 2.0 DW 10 TD – Overview.....	Page 15
PCR 2.0 DV 4 TD – Overview	Page 16
PCR 2.3 DW 10 BTED – Overview.....	Page 17
PCR Lion V6 – Overview.....	Page 18
PCR K9K – Overview	Page 19
PCR Lynx – Overview	Page 20
Application - Overview DW 10 TD / DV 4 TD.....	Page 21
Application - Overview DW 10 BTED / Lion V6.....	Page 22
Application - Overview K9K / Lynx.....	Page 23
Application - Overview – sorted by manufacturer.....	Page 24
Systems - Overview.....	Page 25
Cross reference List	Page 26
Notes.....	Page 30

Special Tools

Special tools	DW 10 TD	DV 4 TD	DW 10 BTED	Lion V6	K9K	Lynx
						
	←		purchase in Tool store		→	
Torque wrenches						
						
	← z.B. HAZET - Nr. 4550 (3/8"-drive) HAZET - Nr. 4550-1 (1/2"-drive)				→	
			(purchase in Tool store)			
Pipe line socket wrench						
						
	←		Order number X39-800-200-001		→	
Special tool pressure control valve (PCV)						
						
	←		Order number X39-800-200-002		→	
Special tool for the volumetric control valve (VCV)						
						
	←		Order number X39-800-200-003		→	
Torque wrench adapter						
						
	← Order number X39-800-200-008			← Order number X39-800-200-008		→
High pressure pump shaft extractor						
						
			Order number X39-800-200-004			
Mounting device for assemble the Flange of DW10BTED pump						
	← Order number X39-800-200-010					
Stop inlet						
						
						
DCP support ①	Order number X39-800-200-005	Order number X39-800-200-006	Order number X39-800-200-007	Order number A2C59511240	Order number X39-800-200-005	Order number X39-800-200-005
Assembly jig (basic jig) ②	←		Order number X39-800-200-009		→	

Common Rail Diesel System

PCR 2.0 DW 10 TD



manufacturer							
2.0l 64 kW 2-valve engine							
Citroen C5	Citroen Berlingo	Citroen Xsara	Peugeot 307	Peugeot 406 (Facelift)	Peugeot 407	Peugeot Partner	Suzuki Vitara

Common Rail Diesel System

PCR 2.0 DV 4 TD



manufacturer							
1.4l 50 kW Euro 3 / Euro 4							
Citroen C1	Citroen C2	Citroen C3	Ford Fiesta	Ford Fusion	Peugeot 107	Peugeot 307	Peugeot 1007
Mazda 2	Toyota Aygo						

Common Rail Diesel System

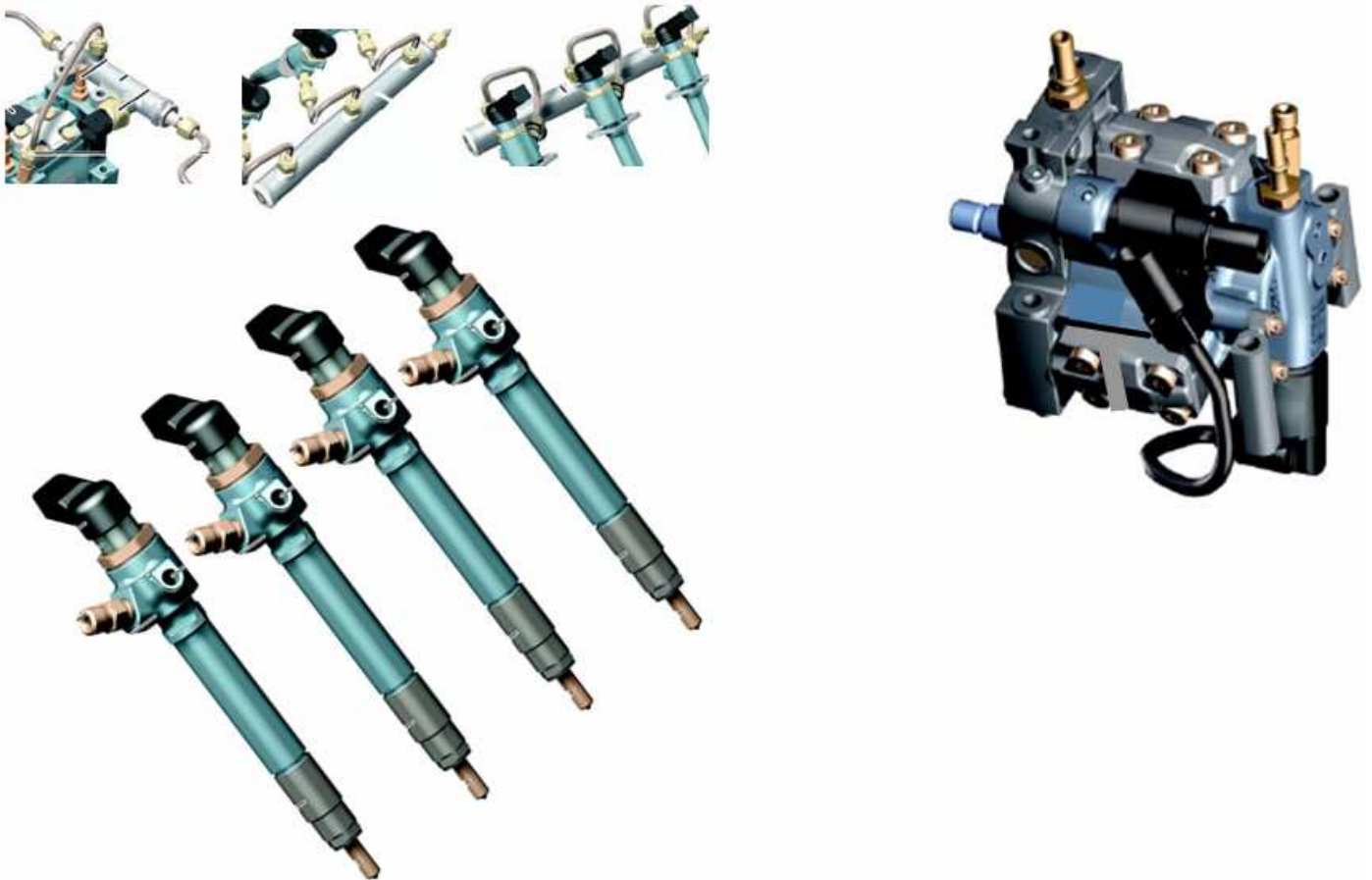
PCR 2.3 DW 10 BTED



manufacturer							
2.0l 100 kW 4-valve engine							
Citroen C4	Citroen C5	Citroen C8	Citroen Picasso	Ford C-Max	Ford Galaxy	Ford Mondeo	Ford S-Max
Peugeot 307	Peugeot 407	Peugeot 607	Peugeot 807	Volvo C30	Volvo S40	Volvo V50	

Common Rail Diesel System

PCR 2.3 Lion V6



manufacturer						
2.7l 4-valve engine Euro 3 / Euro 4						
Citroen C6	Jaguar S-Type	Jaguar XJ	Peugeot 407	Peugeot 607	Land Rover Discovery	Range Rover Sport

Common Rail Diesel System

PCR 2.3 K9K



manufacturer					
1.5l 66 kW 85 kW					
Nissan Qashqai	Nissan Tiida	Renault Clio	Renault Megane	Renault Modus	Renault Scenic

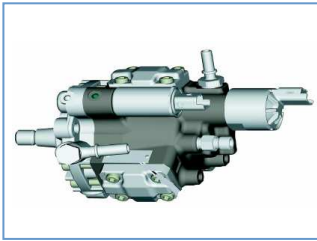
Common Rail Diesel System

PCR 2.3 Lynx



manufacturer				
1.8l 85 kW 92 kW				
Ford C-Max	Ford Connect	Ford Galaxy	Ford Mondeo	Ford S-Max

Replacement Parts



High Pressure Pumps

Order number DW 10 TD.....5WS40018-Z
Order number DV 4 TD.....5WS40008-Z
Order number DW 10 BTED.....5WS40019-Z

Order number DW 10 BTED Volvo5WS40163-Z

[will be replaced by:](#)

Order number DW 10 BTED Volvo (NEW)..... A2C59511600

Order number Lion V6.....A2C59511314

Order number K9K.....A2C59511605

Order number Lynx.....A2C59511609



Injectors

Order number DW 10 TD..... 5WS40000-Z

Order number DV 4 TD Euro3..... 5WS40148-Z

Order number DV 4 TD Euro4..... 5WS40149-Z

[will be replaced by:](#)

Order number DV 4 TD Kyocera Euro 4..... A2C59511612

Order number DW 10 BTED Class 4..... 5WS40156-4Z

Order number DW 10 BTED Class 5 5WS40156-Z

Order number DW 10 BTED Class 6..... A2C59511601

Order number DW 10 U MFMA..... A2C59511602

Order number DW 10 BTED MFMA..... A2C59511603

Order number Lion V6 Euro 3 (Jaguar)..... A2C59511315

Order number Lion V6 Euro 4 (Jaguar+PSA).. A2C59511316

Order number Lion V6 (Landrover)..... A2C59511364

Order number K9K..... A2C59511606

Order number Lynx..... A2C59511610

Order number Lynx (Injector V227)..... A2C59511611

Replacement Parts



Set High Pressure Pipes

Order number Pipe Pump DW 10 TD.....5WS40003-Z *
Order number Pipe Pump DW 10 BTED.....5WS40040-Z *



Order number Pipe Cyl. 1+3 DW 10 TD.....5WS40004-Z *
Order number Pipe Cyl. 1+3 DW 10 BTE.....5WS40042-Z *



Order number Pipe Cyl. 2+4 DW 10 TD.....5WS40005-Z *
Order number Pipe Cyl. 2+4 DW 10 BTE.....5WS40043-Z *

** only for welded rails until 11/2004*



Rail

Diverter Rail with High Pressure Sensor

Order number Lion V6.....A2C59511317



Left-hand Rail

Order number Lion V6.....A2C59511318

Right-hand Rail

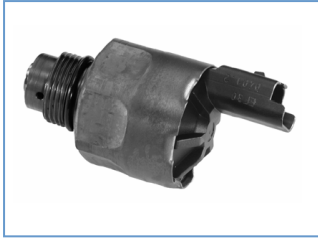
Order number Lion V6.....A2C59511319



Rail with High Pressure Sensor

Order number K9K.....A2C59511607

Replacement Parts



Pressure Control Valve (PCV)

Order number.....X39-800-300-005Z



Volume Control Valve (VCV)

Order number (*screwed*).....X39-800-300-006Z

DW 10 TD | DV 4 TD | Lynx

Order number (*flanged*)X39-800-300-018Z

DW 10 BTED

Order number.....A2C20000719Z

Lion V6

Order number.....A2C53259841Z

K9K



Set Connectors High Pressure Pump

Order number DW 10 TD.....X39-800-300-002Z

Order number DV 4 TD.....X39-800-300-015Z

Order number DW 10 BTED.....X39-800-300-016Z

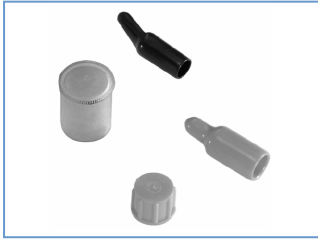
Order number DW 10 BTED VolvoX39-800-300-017Z

Order number Lion V6.....A2C59512211

Order number K9K.....A2C59512191

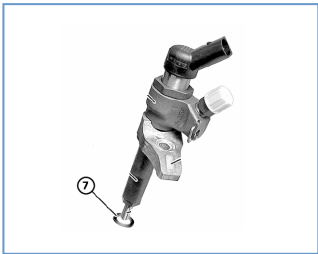
Order number Lynx.....A2C59512242

Replacement Parts



Set Safety Caps

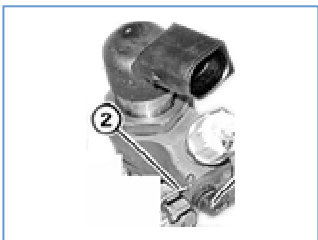
Order number DW 10 TD	X39-800-300-003Z
Order number DV 4 TD.....	X39-800-300-012Z
Order number DW 10 BTED.....	X39-800-300-013Z
Order number	X39-800-300-014Z
DW 10 BTED Volvo Lynx	
Order number Lion V6.....	A2C59512210
Order number K9K.....	A2C59512192



Copper Rings ⑦

(Set of 100 Pieces)

Order number DW 10 TD.....	X11-800-002-001Z
Order number DW 10 BTED.....	X11-800-002-002Z
Order number	X11-800-002-003Z
Order number DV 4 TD.....	X11-800-002-004Z



Leakage-Clips ②

(Set of 100 Pieces)

Order number DV 4 TD.....	X11-800-001-001Z
Order number DW 10 BTED.....	X11-800-001-002Z
Order number DW 10 TD.....	X11-800-001-003Z



Mounting bracket

Order number Lion V6.....	A2C59511320
---------------------------	-------------

Repair Parts *(not salable)*



Repair Kit Internal Transfer Pump (ITP)

Order numberX39-800-300-010Z
(not useable for Lynx)



Repair Kit High Pressure Elements

Order number.....X39-800-300-008Z
DW 10 TD | DV 4 TD | DW 10 BTED
DW 10 BTED Volvo | K9K | Lynx
Order number Lion V6.....A2C20003768Z



Repair Kit Thrust Plate

Order numberX39-800-300-011Z
(not useable for Lynx)

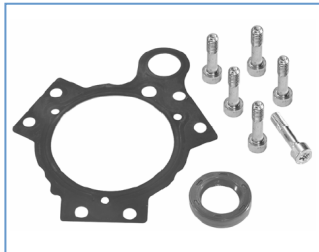


Repair Kit Flange

Order number DW 10 TDX39-800-300-009Z
Order number DV 4 TD.....X39-800-300-021Z
Order number DW 10 BTED.....X39-800-300-022Z
Order number DW 10 BTED Volvo.....X39-800-300-030Z
Order number Lion V6.....A2C59512212
Order number K9K.....A2C20000777
Order number Lynx.....A2C20003697**

**** This article number includes the following components as such -
Repair Kit Flange, Repair Kit Internal Transfer Pump (ITP), Repair Kit Thrust Plate,
Cam Shaft –
Parts are compressed and can only be exchanged in one piece.**

Repair Parts *(not salable)*



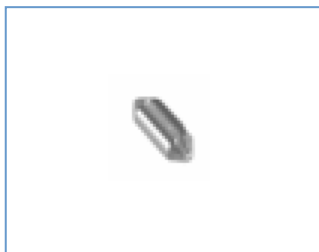
Gasket Kit Flange

Order numberX39-800-300-001Z
DW 10 TD| K9K | Lynx
Order number DV 4 TD.....X39-800-300-019Z
Order number DW 10 BTED.....X39-800-300-020Z
Order number Lion V6.....A2C59512213



Gasket Kit High Pressure Elements

Order number.....X39-800-300-004Z
DW 10 TD | DV 4 TD | DW 10 BTED
K9k | Lynx
Order number Lion V6.....A2C59512214



Cylinder Roller

(Set of 100 Pieces)

Order number.....X39-800-300-023Z
(not useable for Lynx)

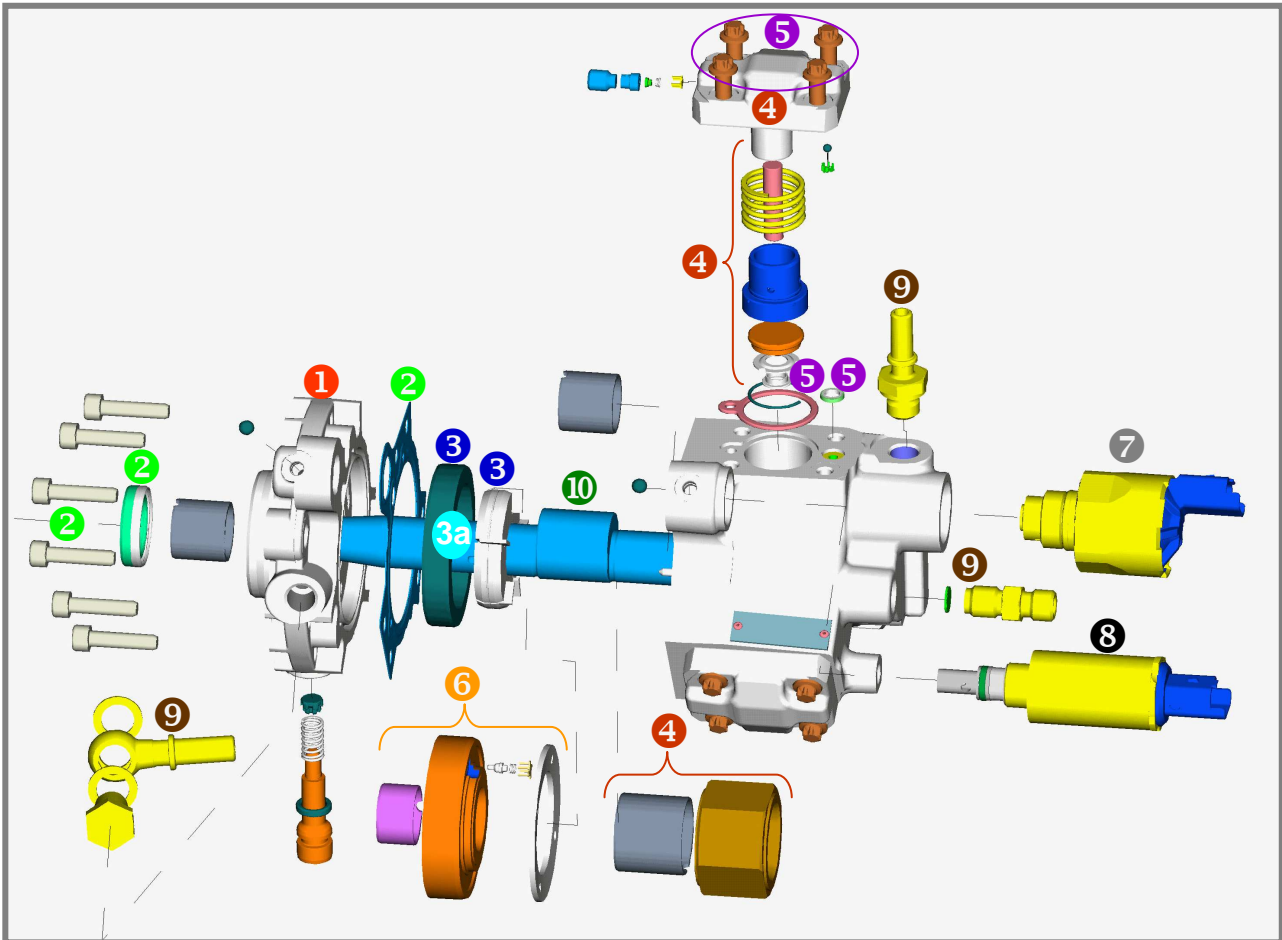


Cam Shaft

Order number DW 10 TD | Lion V6.....A2C59511247
Order number DV 4 TD.....A2C59511248
Order number DW 10 BTED.....A2C59511249
Order number K9K.....A2C53282738Z
(not useable for Lynx)

Common Rail Diesel System

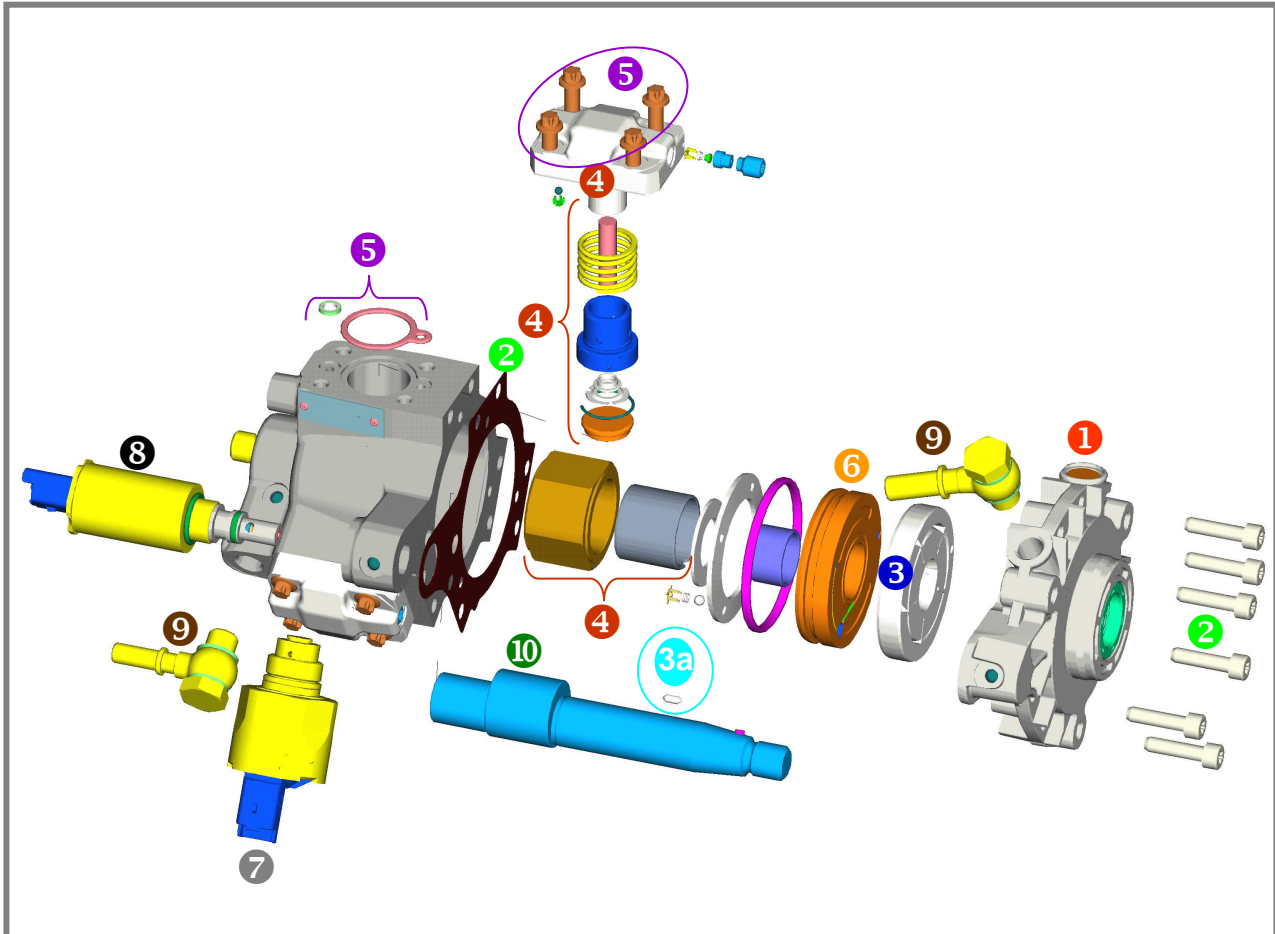
PCR 2.0 DW 10 TD - Overview



- | | | | |
|-----------|---|-----------|--|
| 1 | Repair Kit Flange
X39-800-300-009Z | 6 | Repair Kit Thrust Plate
X39-800-300-011Z |
| 2 | Gasket Kit Flange
X39-800-300-001Z | 7 | Pressure Control Valve (PCV)
X39-800-300-005Z |
| 3 | Repair Kit Internal Transfer Pump (ITP)
X39-800-300-010Z | 8 | Volume Control Valve (VCV)
X39-800-300-006Z |
| 3a | Cylinder Roller
X39-800-300-023Z | 9 | Set Connectors
High Pressure Pump
X39-800-300-002Z |
| 4 | Repair Kit High Pressure Elements
X39-800-300-008Z | 10 | Cam Shaft
A2C59511247 |
| 5 | Gasket Kit High Pressure Elements
X39-800-300-004Z | | |

Common Rail Diesel System

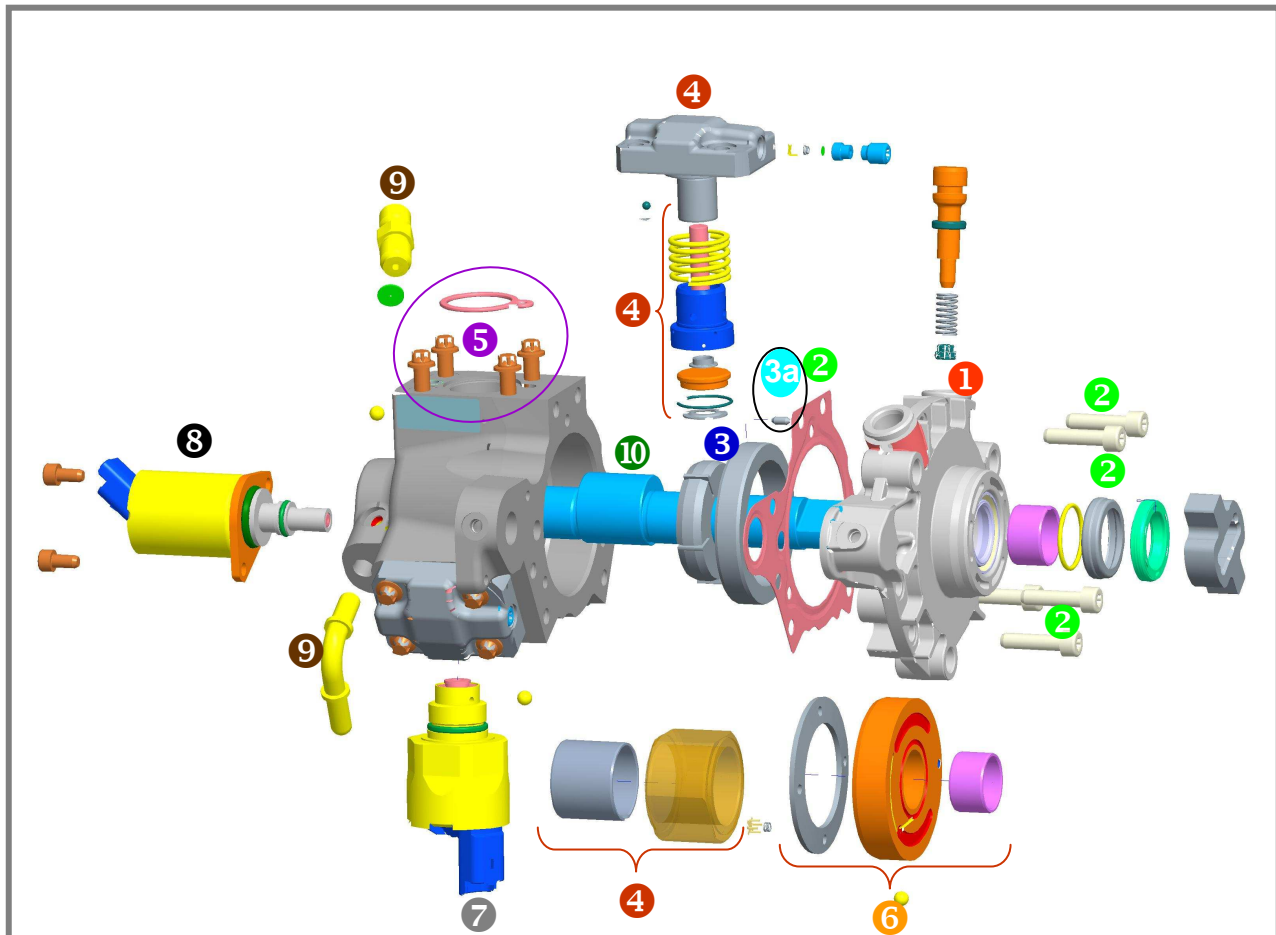
PCR 2.0 DV 4 TD - Overview



- | | | | |
|-----------|---|-----------|--|
| 1 | Repair Kit Flange
X39-800-300-021Z | 6 | Repair Kit Thrust Plate
X39-800-300-011Z |
| 2 | Gasket Kit Flange
X39-800-300-019Z | 7 | Pressure Control Valve (PCV)
X39-800-300-005Z |
| 3 | Repair Kit Internal Transfer Pump (ITP)
X39-800-300-010Z | 8 | Volume Control Valve (VCV)
X39-800-300-006Z |
| 3a | Cylinder Roller
X39-800-300-023Z | 9 | Set Connectors
High Pressure Pump
X39-800-300-015Z |
| 4 | Repair Kit High Pressure Elements
X39-800-300-008Z | 10 | Cam Shaft
A2C59511248 |
| 5 | Gasket Kit High Pressure Elements
X39-800-300-004Z | | |

Common Rail Diesel System

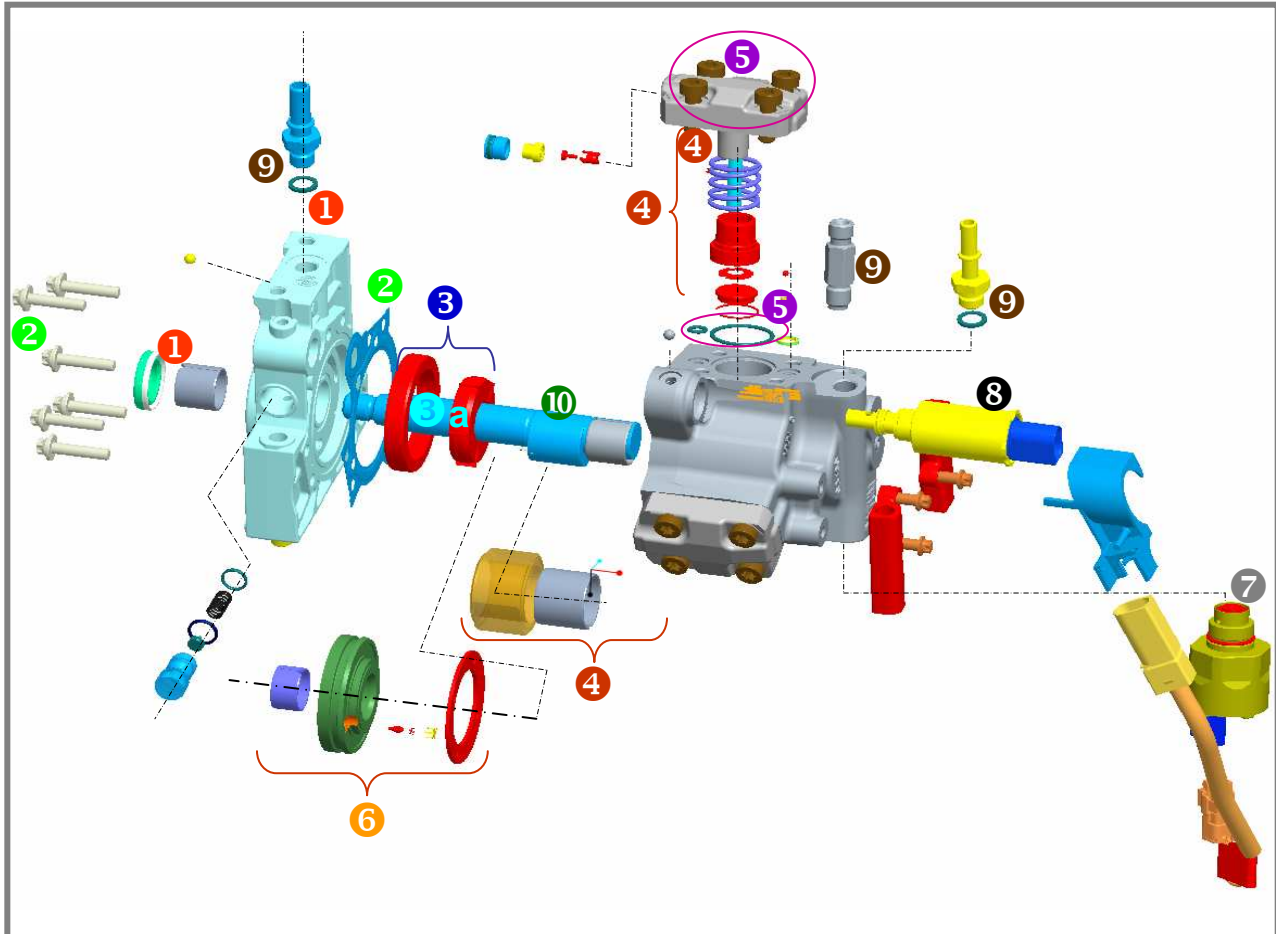
PCR 2.3 DW 10 BTED - Overview



- | | |
|---|---|
| <p>1 Repair Kit Flange
X39-800-300-022Z
X39-800-300-030Z (Volvo)</p> <p>2 Gasket Kit Flange
X39-800-300-020Z</p> <p>3 Repair Kit Internal Transfer Pump (ITP)
X39-800-300-010Z</p> <p>3a Cylinder Roller
X39-800-300-023Z</p> <p>4 Repair Kit High Pressure Elements
X39-800-300-008Z</p> <p>5 Gasket Kit High Pressure Elements
X39-800-300-004Z</p> | <p>6 Repair Kit Thrust Plate
X39-800-300-011Z</p> <p>7 Pressure Control Valve (PCV)
X39-800-300-005Z</p> <p>8 Volume Control Valve (VCV)
X39-800-300-018Z</p> <p>9 Set Connectors
High Pressure Pump
X39-800-300-016Z
X39-800-300-017Z (Volvo)</p> <p>10 Cam Shaft
A2C59511249</p> |
|---|---|

Common Rail Diesel System

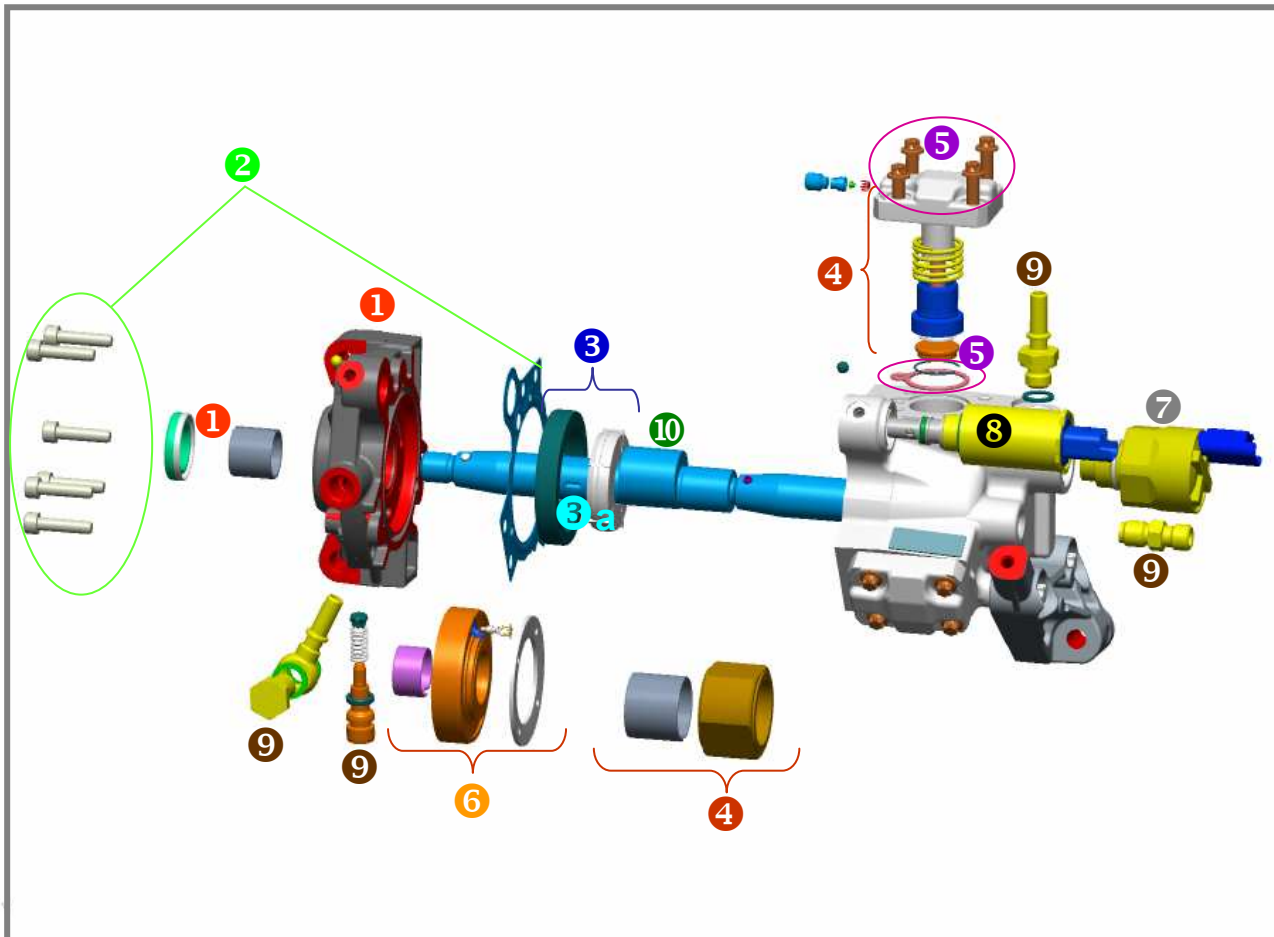
PCR Lion V6 - Overview



- | | |
|--|--|
| 1 Repair Kit Flange
A2C59512212 | 6 Repair Kit Thrust Plate
X39-800-300-011Z |
| 2 Gasket Kit Flange
A2C59512213 | 7 Pressure Control Valve (PCV)
X39-800-300-005Z |
| 3 Repair Kit Internal Transfer Pump (ITP)
X39-800-300-010Z | 8 Volume Control Valve (VCV)
A2C20000719Z |
| 3 a Cylinder Roller
X39-800-300-023Z | 9 Set Connectors
High Pressure Pump
A2C59512211 |
| 4 Repair Kit High Pressure Elements
A2C20003768Z | 10 Cam Shaft
A2C59511247 |
| 5 Gasket Kit High Pressure Elements
A2C59512214 | |

Common Rail Diesel System

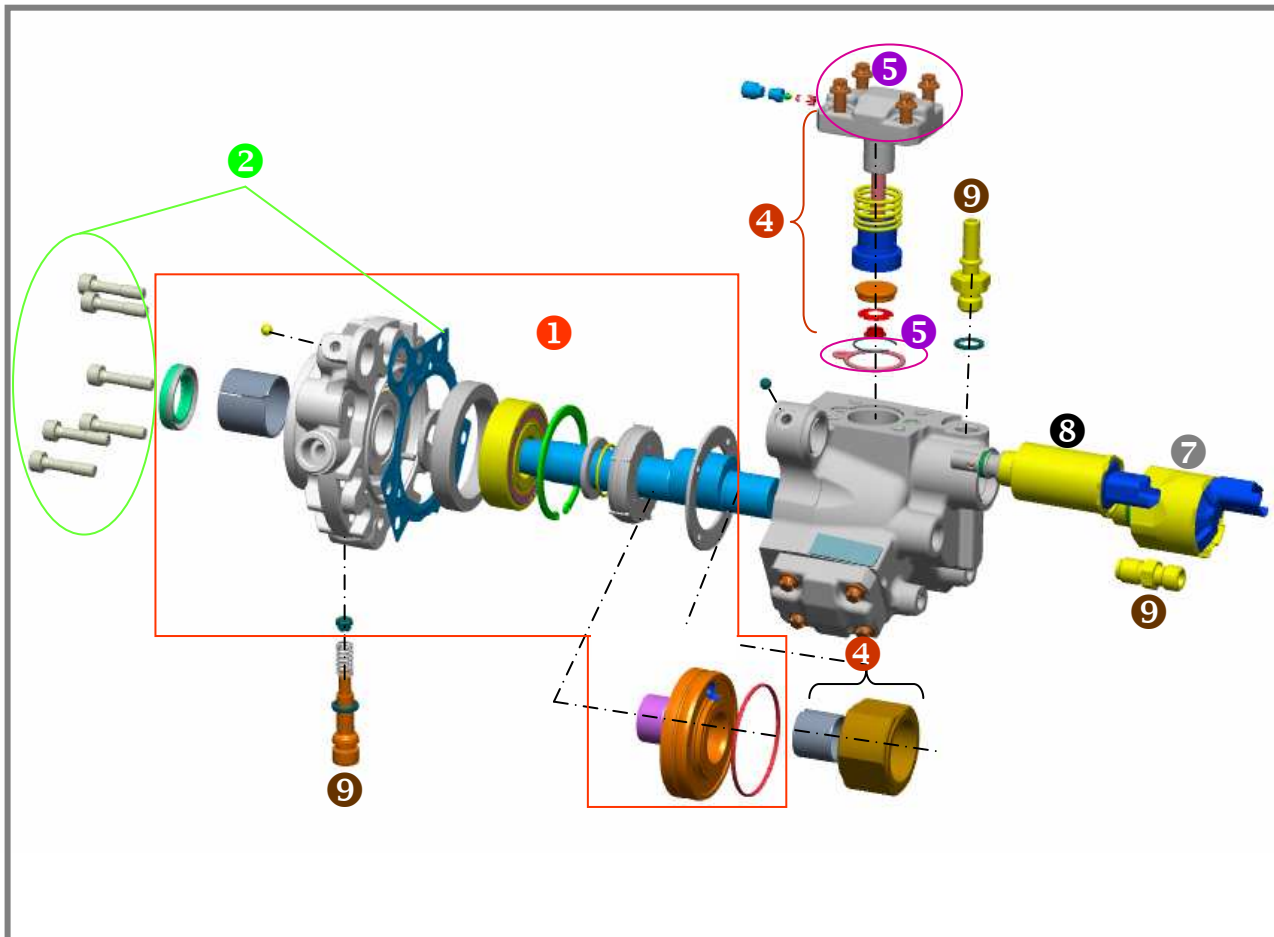
PCR K9K - Overview



- ① Repair Kit Flange
A2C20000777
- ② Gasket Kit Flange
X39-800-300-001Z
- ③ Repair Kit Internal Transfer Pump (ITP)
X39-800-300-010Z
- ③a Cylinder Roller
X39-800-300-023Z
- ④ Repair Kit High Pressure Elements
X39-800-300-008Z
- ⑤ Gasket Kit High Pressure Elements
X39-800-300-004Z
- ⑥ Repair Kit Thrust Plate
X39-800-300-011Z
- ⑦ Pressure Control Valve (PCV)
X39-800-300-005Z
- ⑧ Volume Control Valve (VCV)
A2C53259841Z
- ⑨ Set Connectors
High Pressure Pump
A2C59512191
- ⑩ Cam Shaft
A2C53282738Z

Common Rail Diesel System

PCR Lynx - Overview

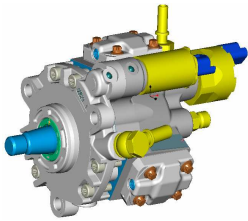


- ① Assembly Flange
A2C20003697
- ② Gasket Kit Flange
X39-800-300-001Z
- ③ included in assembly (1)
- ④ Repair Kit High Pressure Elements
X39-800-300-008Z
- ⑤ Gasket Kit High Pressure Elements
X39-800-300-004Z
- ⑦ Pressure Control Valve (PCV)
X39-800-300-005Z
- ⑧ Volume Control Valve (VCV)
X39-800-300-006Z
- ⑨ Set Connectors
High Pressure Pump
A2C59512242

Overview

Siemens VDO PCR 2.0 DW 10 TD

2.0l | 64 kW | 2 Valve



Peugeot Partner



Pump
5WS40018-Z

Injector
5WS40000-Z

Peugeot 307



Peugeot 406
(Facelift)



Pipe (Pump)
5WS40003-Z *

Pipe (Cylinder 1+3)
5WS40004-Z *

Peugeot 407



Citroen Berlingo



Pipe (Cylinder 2+4)
5WS40005-Z *

Leakage-Clip
X11-800-001-003Z

Citroen
Xsara



Citroen C5

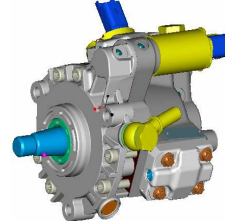


Suzuki Vitara



Siemens VDO PCR 2.0 DV 4 TD

1.4l | 50 kW EURO 3 / EURO 4



Ford Fiesta



Pump
5WS40008-Z

Injector
Euro 3
5WS40148-Z

Ford Fusion



Citroen C1



Injector
Euro 4
5WS40149-Z

Peugeot 307



Peugeot 107
Peugeot 1007



Citroen C2



Injector
Euro 4 (Kyocera)
A2C59511612

Leakage-Clip
X11-800-001-001Z

Mazda 2



Citroen C3



Toyota Aygo

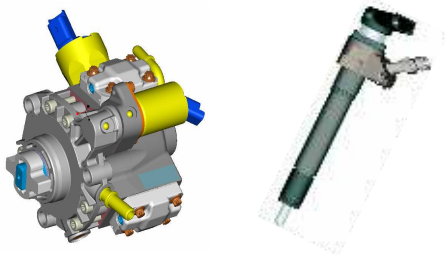


* only for welded rails until 11/2004

Overview

Siemens VDO PCR 2.3 DW 10 BTED

2.0l | 100 kW | 4 Valve



Peugeot 307



Pump

5WS40019-Z

Pump (Volvo)

5WS40163Z

Peugeot 407



Pump (Volvo-New)

A2C59511600

Injector, Class 4

5WS40156-4Z

Injector, Class 5

5WS40156-Z

Ford C-Max

Ford S-Max

Ford Galaxy

Ford Mondeo



Injector, Class 6

A2C59511601

Injector DW10U-MFMA

A2C59511602

Injector MFMA

A2C59511603

Volvo C30



Pipe (Pump)

5WS40040-Z

Volvo S40



Pipe (Cylinder 1+2)

5WS40042-Z

Pipe (Cylinder 3+4)

5WS40043-Z

Volvo V5U



Leakage-Clip

X11-800-001-003Z

Peugeot 607



Peugeot 807



Citroen C4



Citroen C5



Citroen C8



Citroen Picasso



Siemens VDO PCR 2.3 Lion V6

2.7l | 4 Valve | EURO 3 / EURO 4



Peugeot 407



Pump

A2C59511314

Injector Euro 3 (Jaguar)

A2C59511315

Citroen C6



Injector Euro 4 (Jaguar + PSA)

A2C59511316

Land Rover Discovery



Injector (Land Rover)

A2C59511364

Diverter Rail

A2C59511317

Right-hand rail

A2C59511319

RangeRover Sport



Left-hand rail

A2C59511318

Mounting bracket

A2C59511320

Peugeot 607



Jaguar S-Type



Jaguar XJ

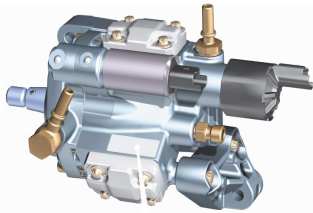


* only for welded rails until 11/2004

Overview

Siemens VDO PCR 2.3 K9K

1.5l | 66 kW | 85 kW



Nissan Qashqai



Pump

A2C59511605

Injector

A2C59511606

Renault Clio



Nissan Tiida



Rail with high pressure sensor
A2C59511607

Renault Scenic



Renault Modus

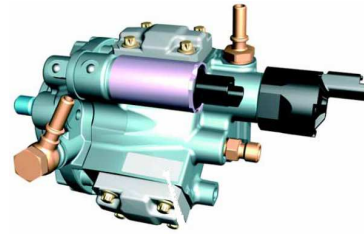


Renault Megane



Siemens VDO PCR 2.3 Lynx

1.8l | 85 kW | 92 kW



Ford S-MAX



Pump

A2C59511609

Injector

A2C59511610

Ford Mondeo



Ford Galaxy



Injector V227
A2C59511611

Ford Connect



Ford C-MAX



Application overview

- Sorted by manufacturer -

OE-manufacturer	Type	Engine	System
Citroen	Berlingo	2.0l - 64 kW - 2 Valve	PCR 2.0 DW 10 TD
Citroen	C1	1.4l - 50 kW - Euro 3/Euro 4	PCR 2.0 DV 4 TD
Citroen	C2	1.4l - 50 kW - Euro 3/Euro 4	PCR 2.0 DV 4 TD
Citroen	C3	1.4l - 50 kW - Euro 3/Euro 4	PCR 2.0 DV 4 TD
Citroen	C4	2.0l - 100 kW - 4 Valve	PCR 2.0 DW 10 BTED
Citroen	C5	2.0l - 64 kW - 2 Valve	PCR 2.0 DW 10 TD
Citroen	C5	2.0l - 100 kW - 4 Valve	PCR 2.0 DW 10 BTED
Citroen	C6	2.7l - 4 Valve - Euro 3/Euro 4	PCR Lion V6
Citroen	C8	2.0l - 100 kW - 4 Valve	PCR 2.0 DW 10 BTED
Citroen	Picasso	2.0l - 100 kW - 4 Valve	PCR 2.0 DW 10 BTED
Citroen	Xsara	2.0l - 64 kW - 2 Valve	PCR 2.0 DW 10 TD
Ford	C-Max	2.0l - 100 kW - 4 Valve	PCR 2.0 DW 10 BTED
Ford	C-Max	1.8l - 85 kW / 92 kW	PCR Lynx
Ford	Connect	1.8l - 85 kW / 92 kW	PCR Lynx
Ford	Fiesta	1.4l - 50 kW - Euro 3/Euro 4	PCR 2.0 DV 4 TD
Ford	Fusion	1.4l - 50 kW - Euro 3/Euro 4	PCR 2.0 DV 4 TD
Ford	Galaxy	2.0l - 100 kW - 4 Valve	PCR 2.0 DW 10 BTED
Ford	Galaxy	1.8l - 85 kW / 92 kW	PCR Lynx
Ford	Mondeo	2.0l - 100 kW - 4 Valve	PCR 2.0 DW 10 BTED
Ford	Mondeo	1.8l - 85 kW / 92 kW	PCR Lynx
Ford	S-Max	2.0l - 100 kW - 4 Valve	PCR 2.0 DW 10 BTED
Ford	S-Max	1.8l - 85 kW / 92 kW	PCR Lynx
Jaguar	S-Type	2.7l - 4 Valve - Euro 3/Euro 4	PCR Lion V6
Jaguar	XJ	2.7l - 4 Valve - Euro 3/Euro 4	PCR Lion V6
Land Rover	Discovery	2.7l - 4 Valve - Euro 3/Euro 4	PCR Lion V6
Mazda	2	1.4l - 50 kW - Euro 3/Euro 4	PCR 2.0 DV 4 TD
Nissan	Qashqai	1.5l - 66 kW / 85 kW	PCR K9K
Nissan	Tiida	1.5l - 66 kW / 85 kW	PCR K9K
Peugeot	107	1.4l - 50 kW - Euro 3/Euro 4	PCR 2.0 DV 4 TD
Peugeot	307	2.0l - 64 kW - 2 Valve	PCR 2.0 DW 10 TD
Peugeot	307	1.4l - 50 kW - Euro 3/Euro 4	PCR 2.0 DV 4 TD
Peugeot	307	2.0l - 100 kW - 4 Valve	PCR 2.0 DW 10 BTED
Peugeot	407	2.0l - 64 kW - 2 Valve	PCR 2.0 DW 10 TD
Peugeot	407	2.0l - 100 kW - 4 Valve	PCR 2.0 DW 10 BTED
Peugeot	407	2.7l - 4 Valve - Euro 3/Euro 4	PCR Lion V6
Peugeot	607	2.0l - 100 kW - 4 Valve	PCR 2.0 DW 10 BTED
Peugeot	607	2.7l - 4 Valve - Euro 3/Euro 4	PCR Lion V6
Peugeot	807	2.0l - 100 kW - 4 Valve	PCR 2.0 DW 10 BTED
Peugeot	1007	1.4l - 50 kW - Euro 3/Euro 4	PCR 2.0 DV 4 TD
Peugeot	406 (Facelift)	2.0l - 64 kW - 2 Valve	PCR 2.0 DW 10 TD
Peugeot	Partner	2.0l - 64 kW - 2 Valve	PCR 2.0 DW 10 TD
Range Rover	Sport	2.7l - 4 Valve - Euro 3/Euro 4	PCR Lion V6
Renault	Clio	1.5l - 66 kW / 85 kW	PCR K9K
Renault	Megane	1.5l - 66 kW / 85 kW	PCR K9K
Renault	Modus	1.5l - 66 kW / 85 kW	PCR K9K
Renault	Scenic	1.5l - 66 kW / 85 kW	PCR K9K
Suzuki	Vitara	2.0l - 64 kW - 2 Valve	PCR 2.0 DW 10 TD
Toyota	Aygo	1.4l - 50 kW - Euro 3/Euro 4	PCR 2.0 DV 4 TD
Volvo	C30	2.0l - 100 kW - 4 Valve	PCR 2.0 DW 10 BTED
Volvo	S40	2.0l - 100 kW - 4 Valve	PCR 2.0 DW 10 BTED
Volvo	V50	2.0l - 100 kW - 4 Valve	PCR 2.0 DW 10 BTED

Common Rail Diesel System

- Overview -

PCR 2.0 DW 10 TD	PCR 2.0 DV 4 TD	PCR 2.0 DW 10 BTED	PCR Lion V6	PCR K9K	PCR Lynx
Pump 5WS40018-Z	Pump 5WS40008-Z	Pump 5WS40019-Z Pump (Volvo) 5WS40163Z Pump (Volvo-NEW) A2C 59511600	Pump A2C 59511314	Pump A2C 59511605	Pump A2C 59511609
Injector 5WS40000-Z	Injector, Euro 3 5WS40148-Z Injector, Euro 4 5WS40149-Z Injector, Euro 4 (Kyocera) A2C 59511612	Injector, Class 4 5WS40156-4Z Injector, Class 5 5WS40156-Z Injector, Class 6 A2C 59511601 Injector DW10U-MFMA A2C 59511602 Injector MFMA A2C 59511603	Injector Euro 3 (only Jaguar) A2C 59511315 Injector Euro 4 (Jaguar + PSA) A2C 59511316 Injector (only Land Rover) A2C 59511364	Injector A2C 59511606	Injector A2C 59511610 Injector V227 A2C 59511611
Pipe Pump 5WS40003-Z *		Pipe Pump 5WS40040-Z *			
Pipe Cylinder 1+3 5WS40004-Z *		Pipe Cylinder 1+3 5WS40042-Z *			
Pipe Cylinder 2+4 5WS40005-Z *		Pipe Cylinder 2+4 5WS40043-Z *			
Leakage-Clip X11-800-001-001Z	Leakage-Clip X11-800-001-001Z	Leakage-Clip X11-800-001-003Z			Leakage-Clip X11-800-001-003Z
			Diverter Rail A2C 59511317 Right-hand Rail A2C 59511319 Left-hand Rail A2C 59511318	Rail with High Pressure Sensor A2C 59511607	
			Injector Clamp A2C 59511320		
Pressure Control Valve PCV X39-800-300-005Z	PCV X39-800-300-005Z	PCV X39-800-300-005Z	PCV X39-800-300-005Z	PCV X39-800-300-005Z	PCV X39-800-300-005Z
Volume Control Valve VCV (screwed) X39-800-300-006Z	VCV (screwed) X39-800-300-006Z	VCV (flanged) X39-800-300-018Z	VCV A2C 20000719Z	VCV A2C 53259841Z	VCV X39-800-300-006Z
Set Connectors H P P X39-800-300-002Z	Set Connectors H P P X39-800-300-015Z	Set Connectors H P P X39-800-300-016Z X39-800-300-017Z (Volvo)	Set Connectors H P P A2C 59512211	Set Connectors H P P A2C 59512191	Set Connectors H P P A2C 59512242
Set Safety Caps X39-800-300-003Z	Set Safety Caps X39-800-300-012Z	Set Safety Caps X39-800-300-013Z X39-800-300-014Z (Volvo)	Set Safety Caps A2C 59512210	Set Safety Caps A2C 59512192	Set Safety Caps X39-800-300-014Z
Copper Rings (Set of 100 pieces) X11-800-002-001Z	Copper Rings (Set of 100 pieces) X11-800-002-004Z	Copper Rings (Set of 100 pieces) X11-800-002-002Z			

* only for welded rails until 11/2004

Cross reference List

- updated at July 2008 -

OE-number	OE-manufacturer	SVT-ordernumber	part description	remarks	System
1231950	Ford	5WS40040-Z	Pipe Pump-Rail	only for welded rails until 11/2004	DW10BTED
1231951	Ford	5WS40042-Z	Pipe Cyl. 1+3	only for welded rails until 11/2004	DW10BTED
1334919	Ford	A2C59511314	CR-pump	5WS40157	DT17 / Lion V6
1348623	Ford	5WS40148-F	Injector Euro3		DV4TD
1348625	Ford	X11-800-002-001Z	Washer 2.5mm		DV4TD
1355051	Ford	A2C59511610	Injector	5WS40086	Lynx
1355053	Ford	A2C59511609	CR-pump	5WS40094	Lynx
1369551	Ford	A2C59511318	Rail left	5WS40129	DT17 / Lion V6
1369552	Ford	A2C59511319	Rail right	5WS40130	DT17 / Lion V6
1373546	Ford	5WS40019-Z	CR-pump		DW10BTED
1373549	Ford	5WS40156-4Z	Injector Class 4		DW10BTED
1373550	Ford	5WS40156-Z	Injector Class 5		DW10BTED
1376439	Ford	A2C59511600	CR-pump	5WS40380	DW10BTED
1387695	Ford	A2C59511317	Diverter rail	5WS40128	DT17 / Lion V6
1404786	Ford	5WS40008-Z	CR-pump		DV4TD
1432322	Ford	A2C59511611	Injector V227	5WS40250	Lynx
1459401	Ford	A2C59511609	CR-pump	5WS40094	Lynx
1469709	Ford	5WS40149-Z	Injector Euro4		DV4TD
1483820	Ford	A2C59511601	Injector Class 6	5WS40156-6	DW10BTED
1488987	Ford	5WS40008-Z	CR-pump		DV4TD
8603527	Volvo	5WS40163-Z	CR-pump		DW10BTED
8603564	Volvo	5WS40156-Z	Injector Class 5		DW10BTED
8603565	Volvo	5WS40156-4Z	Injector Class 4		DW10BTED
1570.A9	PSA	5WS40003-Z	Pipe Pump-Rail	only for welded rails until 11/2004	DW10TD
1570.C1	PSA	5WS40004-Z	Pipe Cyl. 1+3	only for welded rails until 11/2004	DW10TD
1570.C2	PSA	5WS40005-Z	Pipe Cyl. 2+4	only for welded rails until 11/2004	DW10TD
1570.F8	PSA	5WS40040-Z	Pipe Pump-Rail	only for welded rails until 11/2004	DW10BTED
1570.G0	PSA	5WS40042-Z	Pipe Cyl. 1+3	only for welded rails until 11/2004	DW10BTED
1570.G1	PSA	5WS40043-Z	Pipe Cyl. 2+4	only for welded rails until 11/2004	DW10BTED
1570.G8	PSA	A2C59511318	Rail left	5WS40129	DT17 / Lion V6
1570.G9	PSA	A2C59511319	Rail right	5WS40130	DT17 / Lion V6
1570.H4	PSA	A2C59511317	Diverter rail	5WS40128	DT17 / Lion V6
1579.KK	PSA	X11-800-001-002Z	Leakage-Clip		DT17 / Lion V6
1920.CG	PSA	5WS40018-Z	CR-Pump		DW10TD
1920.EP	PSA	5WS40008-Z	CR-pump		DV4TD
1920.HJ	PSA	A2C59511314	CR-pump	5WS40157	DT17 / Lion V6
1920.KV	PSA	5WS40019-Z	CR-pump		DW10BTED
1980.90	PSA	5WS40007	Injector	replaced by 5WS40148-Z	DV4TD
1980.C0	PSA	5WS40044	Injector	replaced by 5WS40156-4Z	DW10BTED
1980.E7	PSA	5WS40148-Z	Injector Euro3		DV4TD
1980.E8	PSA	5WS40044	Injector	replaced by 5WS40156-4Z	DW10BTED
1980.F0	PSA	5WS40000-Z	Injector		DW10TD
1980.H1	PSA	A2C59511316	Injector Euro4	5WS40103	DT17 / Lion V6
1980.J1	PSA	5WS40149-Z	Injector Euro4		DV4TD
1980.J4	PSA	5WS40156-4Z	Injector Class 4		DW10BTED
1980.J5	PSA	5WS40156-Z	Injector Class 5		DW10BTED
1980.J9	PSA	not released yet for IAM	Injector Class 7	5WS40322-7	DW10BTED
1980.K0	PSA	not released yet for IAM	Injector Class 8	5WS40322-8	DW10BTED
1980.K5	PSA	A2C59511602	Injector Class M	5WS40200	DW10U
1980.K8	PSA	A2C59511603	Injector Class M	5WS40441	DW10BTED
1980.L0	PSA	A2C59511612	Injector (Kyocera)	5WS40516	DV4TD

Cross reference List

- updated at July 2008 -

OE-number	OE-manufacturer	SVT-ordernumber	part description	remarks	System
1981.65	PSA	X11-800-002-001Z	Washer 2.5mm		DV4TD; DV10TD
1981.67	PSA	X11-800-002-002Z	Washer		DT17 / Lion V6
1981.69	PSA	not released yet for IAM	Washer 2.9mm		DV4TD
1982.A2	PSA	X11-800-001-003Z	Leakage-Clip	A2C00012430	DV10TD
1982.A4	PSA	X11-800-001-002Z	Leakage-Clip		DV10BTED
1982.C4	PSA	X11-800-001-001Z	Leakage-Clip		DV4TD
1982.C6	PSA	A2C59511320	Injector Clamp		DT17 / Lion V6
2S6Q.9A543 AC	Ford	5WS40008-Z	CR-pump		DV4TD
2S6Q.9A543 AD	Ford	5WS40008-Z	CR-pump		DV4TD
2S6Q.9E568 AB	Ford	X11-800-002-001Z	Washer 2.5mm		DV4TD
2S6Q.9F593 AB	Ford	5WS40148-Z	Injector Euro3		DV4TD
2S6Q.9F593 AC	Ford	5WS40148-F	Injector Euro3		DV4TD
2S6Q.9F593 AC	Ford	5WS40148-Z	Injector Euro3		DV4TD
2S6Q.9F593 BC	Ford	5WS40149-Z	Injector Euro4		DV4TD
2S6Q.9F593 BD	Ford	5WS40149-Z	Injector Euro4		DV4TD
2S6Q.9G719 AA	Ford	X11-800-001-001Z	Leakage-Clip		DV4TD
307.251.06	Volvo	not released yet for IAM	Injector	5WS40518	DV10BTED
312.16.456	Volvo	A2C59511601	Injector Class 6	5WS40156-6	DV10BTED
3M5Q.9A543 BD	Ford	5WS40019-Z	CR-pump		DV10BTED
3M5Q.9A543 CB	Ford	A2C59511600	CR-pump	5WS40380	DV10BTED
3M5Q.9F593 DB	Ford	5WS40156-4Z	Injector Class 4		DV10BTED
3M5Q.9F593 EB	Ford	5WS40156-Z	Injector Class 5		DV10BTED
3M5Q.9F593 FB	Ford	A2C59511601	Injector Class 6	5WS40156-6	DV10BTED
3M5Q.9J323 BA	Ford	5WS40040-Z	Pipe Pump-Rail	only for welded rails until 11/2004	DV10BTED
3M5Q.9N868 CA	Ford	5WS40042-Z	Pipe Cyl. 1+3	only for welded rails until 11/2004	DV10BTED
3M5Q.9N868 DA	Ford	5WS40043-Z	Pipe Cyl. 2+4	only for welded rails until 11/2004	DV10BTED
4H2Q.9K546 AE	Ford	5WS40062	Injector	replaced by A2C59511364	
4H2Q.9K546 AF	Ford	A2C59511364	Injector (only Land Rover)	5WS40249	DT17 / Lion V6
4M5Q.9B395 AD	Ford	A2C59511609	CR-pump	5WS40094	Lynx
4M5Q.9B395 AE	Ford	A2C59511609	CR-pump	5WS40094	Lynx
4M5Q.9F524 AA	Ford	X11-800-001-003Z	Leakage-Clip		DV10TD
4M5Q.9F593 AD	Ford	A2C59511610	Injector	5WS40086	Lynx
4R8Q.9C066 AE	Ford	A2C59511317	Diverter rail	5WS40128	DT17 / Lion V6
4R8Q.9D280 AC	Ford	A2C59511318	Rail left	5WS40129	DT17 / Lion V6
4R8Q.9D280 BC	Ford	A2C59511319	Rail right	5WS40130	DT17 / Lion V6
4S7Q.9B395 AJ	Ford	A2C59511314	CR-pump	5WS40157	DT17 / Lion V6
4S7Q.9B395 AK	Ford	A2C59511314	CR-pump	5WS40157	DT17 / Lion V6
4S7Q.9F524 AB	Ford	X11-800-001-002Z	Leakage-Clip		DT17 / Lion V6
4S7Q.9K546 AF	Ford	A2C59511315	Injector Lion V6 Euro 3 (nur Jaguar)	5WS40057	Lion V6
4S7Q.9K546 AG	Ford	A2C59511315	Injector Lion V6 Euro 3 (nur Jaguar)	5WS40057	Lion V6
4S7Q.9L535 AC	Ford	A2C59511320	Injector Clamp	5WS40246	DT17 / Lion V6
4S7Q.9M577 AA	Ford	X11-800-002-002Z	Washer		DT17 / Lion V6
5U3Q.9K546 AA	Ford	A2C59511316	Injector Lion V6 Euro 4	5WS40103	DT17 / Lion V6
6H4Q.9B395 BD	Ford	not released yet for IAM	CR-pump	5WS40254	Lion V8
6H4Q.9B395 BE	Ford	not released yet for IAM	CR-pump	5WS40254	Lion V8
6H4Q.9D280 AB	Ford	not released yet for IAM	Rail left	5WS40256	Lion V8
6H4Q.9D280 BB	Ford	not released yet for IAM	Rail right with HP-sensor	5WS40255	Lion V8
6H4Q.9K546 DB	Ford	not released yet for IAM	Injector	5WS40253	Lion V8
6H4Q.9K546 EB	Ford	not released yet for IAM	Injector 174°	5WS40387	Lion V8
7701.477.442	Renault	X11-800-001-002Z	Leakage-Clip		K9K
7H2Q.9B395 CC	Ford	not released yet for IAM	CR-pump	5WS40273	Lion V6 UG

Cross reference List

- updated at July 2008 -

OE-number	OE-manufacturer	SVT-ordernumber	part description	remarks	System
7H2Q 9B395 CD	Ford	not released yet for IAM	CR-pump	5WS40273	Lion V6 UG
7H2Q 9B395 CE	Ford	not released yet for IAM	CR-pump	5WS40273	Lion V6 UG
7H2Q 9D280 CD	Ford	not released yet for IAM	Rail left with HP-sensor	5WS40272	Lion V6 UG
7H2Q 9D280 DD	Ford	not released yet for IAM	Rail right	5WS40271	Lion V6 UG
7H2Q 9K546 CB	Ford	not released yet for IAM	Injector	5WS40252	Lion V6 UG
7T1Q 9F593 AB	Ford	A2C59511611	Injector V227	5WS40250	Lynx
8200 380 253	Renaut	A2C59511606	Injector	5WS40087	K9K
8200 397 346	Renaut	A2C59511607	Rail with HP-Sensor	5WS40154	K9K
8200 430 599	Renaut	A2C59511605	CR-pump	replaced by 8200 663 258	K9K
8200 663 258	Renaut	A2C59511605	CR-pump	5WS40153	K9K
94 019 82A 43	PSA	X11-800-001-002Z	Leakage-Clip		DW10BTED
94 019 82C 48	PSA	X11-800-001-001Z	Leakage-Clip		DW4TD
94 646 446 80	PSA	X11-800-001-003Z	Leakage-Clip		DW10TD
96 366 738 80	PSA	5WS40018-Z	CR-Pump		DW10TD
96 366 757 80	PSA	5WS40005-Z	Pipe Cyl. 2+4	only for welded rails until 11/2004	DW10TD
96 366 802 80	PSA	5WS40000-Z	Injector		DW10TD
96 368 184 80	PSA	5WS40018-Z	CR-pump		DW10TD
96 368 193 80	PSA	5WS40000-Z	Injector		DW10TD
96 418 520 80	PSA	5WS40008-Z	CR-Pump		DV4TD
96 445 404 8A	PSA	5WS40019-Z	CR-Pump		DW10BTED
96 458 344 80	PSA	5WS40040-Z	Pipe Pump-Rail	only for welded rails until 11/2004	DW10BTED
96 472 472 80	PSA	5WS40044	Injector	replaced by 5WS40156-4Z	DW10BTED
96 489 170 80	PSA	A2C59511316	Injector Euro4	5WS40103	DT17 / Lion V6
96 495 744 80	PSA	5WS40007	Injector	replaced by 5WS40148-Z	DV4TD
96 515 908 80	PSA	5WS40008-Z	CR-Pump		DV4TD
96 521 736 80	PSA	5WS40000-Z	Injector		DW10TD
96 521 737 80	PSA	5WS40000-Z	Injector		DW10TD
96 521 753 80	PSA	5WS40018-Z	CR-Pump		DW10TD
96 521 754 80	PSA	5WS40018-Z	CR-pump		DW10TD
96 527 071 80	PSA	5WS40063	Injector	replaced by 5WS40149-Z	
96 527 632 80	PSA	5WS40007	Injector	replaced by 5WS40148-Z	DV4TD
96 532 764 80	PSA	X11-800-002-001Z	Washer 2.5mm		DW10TD
96 539 696 80	PSA	A2C59511318	Rail left	5WS40129	DT17 / Lion V6
96 539 697 80	PSA	A2C59511319	Rail right	5WS40130	DT17 / Lion V6
96 540 918 80	PSA	5WS40019-Z	CR-pump		DW10BTED
96 545 509 80	PSA	5WS40149-Z	Injector Euro4		DV4TD
96 545 510 80	PSA	5WS40149-Z	Injector Euro4		DV4TD
96 546 155 80	PSA	5WS40163-Z			
96 548 627 80	PSA	not released yet for IAM	Washer 2.9mm		DV4TD
96 550 298 80	PSA	A2C59511314	CR-pump	5WS40157	DT17 / Lion V6
96 553 047 80	PSA	5WS40148-Z	Injector Euro3		DV4TD
96 553 048 80	PSA	5WS40148-Z	Injector Euro3		DV4TD
96 557 147 80	PSA	A2C59511317	Diverter rail	5WS40128	DT17 / Lion V6
96 563 229 80	PSA	X11-800-002-002Z	Washer		DT17 / Lion V6
96 571 445 80	PSA	5WS40156-4Z	Injector Class 4		DW10BTED
96 571 446 80	PSA	5WS40156-Z	Injector Class 5		DW10BTED
96 571 447 80	PSA	5WS40156-Z	Injector Class 5		DW10BTED
96 581 760 80	PSA	5WS40008-Z	CR-pump		DV4TD
96 581 937 80	PSA	5WS40163-Z			
96 581 939 80	PSA	5WS40019-Z	CR-pump		DW10BTED
96 581 941 80	PSA	not released yet for IAM	Injector	5WS40322	DW10BTED
96 581 950 80	PSA	5WS40018-Z	CR-Pump		DW10TD
96 586 760 80	PSA	A2C59511320	Injector Clamp	5WS40246	DT17 / Lion V6
96 592 442 80	PSA	5WS40156-Z			
96 593 379 80	PSA	5WS40019-Z	CR-pump		DW10BTED
96 603 348 80	PSA	A2C59511603	Injector	5WS40441	DW10BTED

Cross reference List

- updated at July 2008 -

OE-number	OE-manufacturer	SVT-ordernumber	part description	remarks	System
96 616 839 80	PSA	not released yet for IAM	Injector Class 9	5WS40420	
96 620 215 80	PSA	A2C59511600	CR-pump (Volvo new)	5WS40380	DW10BTED
96 634 292 80	PSA	A2C59511612	Injector (Kyocera)	5WS40516	DV4TD
96 819 009 80	PSA	5WS40019-Z	CR-pump		DW10BTED
96 830 236 80	PSA	5WS40019-Z	CR-pump		DW10BTED
96 835 287 80	PSA	5WS40008-Z	CR-pump		DV4TD
96 836 237 80	PSA	5WS40019-Z	CR-pump		DW10BTED
96 836 240 80	PSA	A2C59511600	CR-pump (Volvo new)	5WS40380	DW10BTED
96 836 277 80	PSA	5WS40019-Z	CR-pump		DW10BTED
96 854 408 80	PSA	5WS40008-Z	CR-pump		DV4TD
96 857 048 80	PSA	5WS40019-Z	CR-pump		DW10BTED
96 857 050 80	PSA	A2C59511600	CR-pump (Volvo new)	5WS40380	DW10BTED
97 151 354 80	PSA	5WS40063	Injector	replaced by 5WS40149-Z	DV4TD
C2S 21181	Jaguar	X11-800-002-002Z	Washer		DT17 / Lion V6
C2S 24003	Jaguar	A2C59511320	Injector Clamp	5WS40246	DT17 / Lion V6
C2S 29876	Jaguar	A2C59511317	Diverter rail	5WS40128	DT17 / Lion V6
C2S 32276	Jaguar	X11-800-001-002Z	Leakage-Clip		DT17 / Lion V6
C2S 40004	Jaguar	A2C59511316	Injector Euro4	5WS40103	DT17 / Lion V6
C2S 43326	Jaguar	A2C59511317	Diverter rail	5WS40128	DT17 / Lion V6
JDE 2458	Jaguar	A2C59511318	Rail left	5WS40129	DT17 / Lion V6
JDE 2459	Jaguar	A2C59511319	Rail right	5WS40130	DT17 / Lion V6
JDE 3099	Jaguar	A2C59511314	CR-pump	5WS40157	DT17 / Lion V6
JDE 4062	Jaguar	A2C59511318	Rail left	5WS40129	DT17 / Lion V6
JDE 4063	Jaguar	A2C59511319	Rail right	5WS40130	DT17 / Lion V6
LR004295	Land Rover	A2C59511314	CR-pump	5WS40157	DT17 / Lion V6
LR005055	Land Rover	not released yet for IAM	Rail left	5WS40256	Lion V8
LR005056	Land Rover	not released yet for IAM	Rail right with HP-sensor	5WS40255	Lion V8
LR005057	Land Rover	not released yet for IAM	CR-pump	5WS40254	Lion V8
LR005549	Land Rover	not released yet for IAM	CR-pump	5WS40273	Lion V6 UG
LR005551	Land Rover	not released yet for IAM	Rail right	5WS40271	Lion V6 UG
LR005553	Land Rover	not released yet for IAM	Rail left with HP-sensor	5WS40272	Lion V6 UG
LR006495	Land Rover	A2C59511364	Injector (only Land Rover)	5WS40249	DT17 / Lion V6
LR006496	Land Rover	not released yet for IAM	Injector	5WS40252	Lion V6 UG
LR009666	Land Rover	not released yet for IAM	CR-pump	5WS40273	Lion V6 UG
XR8 45127	Jaguar	A2C59511315	Injector Euro 3 (only Jaguar)	5WS40057	DT17 / Lion V6
XR8 56939	Jaguar	A2C59511315	Injector Euro 3 (only Jaguar)	5WS40057	DT17 / Lion V6
	Soralika	X11-800-001-003Z	Leakage-Clip	A2C00012430	